

V TECHNOLOGY

The Clear Choice for Those Who Want It All

Introducing the SOLJET PRO II V series, Roland's latest innovation in advanced printers and integrated printer/cutters. With the advent of V Technology, Roland has re-engineered its award winning SOLJET wide-format line to be better than ever. V Technology adds up to the ultimate standard for printing, cutting, ink, media and RIP technology, and makes the SOLJET PRO II V series ideal for all advanced wide-format applications.



Specifications	SJ-1045IS	SJ-745EX	SJ-645EX	SC-545EX
Printing/cutting method		Piezo inkjet method		Piezo inkjet method/media-moving method
Acceptable media widths	While the print heater is running While the print heater is not running	1220 to 2641 mm (48 to 104 in.)	500 to 1879 mm (19-11/16 to 74 in.) 210 to 1879 mm (8-5/16 to 74 in.)	500 to 1371 mm (19-11/16 to 54 in.) 210 to 1371 mm (8-5/16 to 54 in.)
Printing/cutting width		Maximum 2600 mm (102.3 in.)	Maximum 1869 mm (73-9/16 in.)	Maximum 1615 mm (63-9/16 in.) Maximum 1346 mm (53 in.)
Ink cartridges	Type	Exclusive ECO-SOL MAX cartridge		
	Capacity	220 cc ±5 cc		
Colors		4 colors (cyan, magenta, yellow, and black) or 6 colors (cyan, magenta, yellow, black, light cyan, and light magenta)		6 colors (cyan, magenta, yellow, black, light cyan, and light magenta)
Printing resolution (Printing dot resolution)		Maximum 1440 dpi		
Acceptable tool		Special blade for CAMM-1 series		
Cutting speed		10 to 600 mm/s (10 to 300 mm/s in the media-feed direction)		
Blade force		30 to 300 gf		
Blade offset compensation		0.000 to 1.500 mm (0 to 0.0591 in.)		
Software resolution (When cutting)		0.025 mm/step (0.00984 in./step)		
Distance accuracy (when printing) **		Error of less than ±0.3 % of distance traveled, or 0.3 mm, whichever is greater		
Distance accuracy (when cutting) *		Error of less than ±0.4 % of distance traveled, or ±0.3 mm, whichever is greater. When distance correction has been performed (when the setting for [CALIBRATION] - [CUTTING ADJ.] has been made): Error of less than ±0.2 % of distance traveled, or ±0.1 mm, whichever is greater		
Media take-up system	Roll outer diameter	Maximum 250 mm (9.8 in.)	Optional (180 mm (7-1/16 in.)) *1	
	Roll weight	Maximum 100 kg (220 lb.)	Optional (22 kg (44 lb.)) *3	
Media feed system	Roll outer diameter	Maximum 250 mm (9.8 in.)		
	Roll weight	Maximum 100 kg (220 lb.)		
Heater		Preheater and print heater, setting range for the preset temperature: 35 to 50 °C (96 to 122 °F), and post heater, setting range for the preset temperature: 30 to 50 °C		
Interface		Ethernet (10BASE-T/100BASE-TX, automatic switching)		
Power-saving function		Automatic sleep feature		
Power supply	Voltage and frequency	AC 200 to 240 V ±10 %, 50/60 Hz	AC 117 V ±10 %, 50/60 Hz or AC 220 to 240 V ±10 %, 50/60 Hz	AC 117 V ±10 %, 50/60 Hz or AC 220 to 240 V ±10 %, 50/60 Hz
Power consumption	Required power capacity	10 A	6.5 A (117 V) or 3.3 A (220 to 240 V)	5.8 A (117 V) or 2.7 A (220 to 240 V)
	During operation	Approx. 2400 W	Approx. 770 W	Approx. 640 W
Acoustic noise level	Sleep mode	Approx. 55 W		
	During operation	65 dB (A) or less (according to ISO 7779)		
Dimensions (With stand)	During standby	40 dB (A) or less (according to ISO 7779)		
		3894 (W) x 1159 (D) x 1394 (H) mm (153.4 (W) x 45.7 (D) x 54.9 (H) in.)	3134 (W) x 742 (D) x 1300 (H) mm (123-7/16 (W) x 29-1/4 (D) x 51-3/16 (H) in.)	2953 (W) x 742 (D) x 1300 (H) mm (116-5/16 (W) x 29-1/4 (D) x 51-3/16 (H) in.)
Weight (With stand)		455 kg (1003 lb.)	174 kg (384 lb.)	170 kg (375 lb.) 153 kg (338 lb.)
Environment	Power on	Temperature: 20 to 32 °C (68 to 89.6 °F), humidity: 35 to 80 % (no condensation)	Temperature: 15 to 32 °C (59 to 89.6 °F) (20 °C (68 °F) or more recommended), humidity: 35 to 80 % (no condensation)	
	Power off	Temperature: 5 to 40 °C (41 to 104 °F), humidity: 20 to 80 % (no condensation)	Temperature: 5 to 40 °C (41 to 104 °F), humidity: 20 to 80 % (no condensation)	
Included items		Power cord, roll shafts, end caps, spacers, media reinforcement pipe, paper pipe, drain bottle, media gauge, media clamps, hexagonal wrenches, cap-unt tool, cleaning kit, cleaning liquid cartridges, software RIP, Roland-PrintServer CD-ROM, User's Manual, Setup Guide, Roland-PrintServer Network Settings Guide		
		Power cord, stand, hexagonal wrench, pipe, media flanges, flange retaining pins, drain bottle, bottle stand, transport bars, media reinforcement pipe, software RIP, user's manual, replacement blade for separating knife, Roland-PrintServer CD-ROM, Roland-PrintServer Network Settings Guide, SOL INK cleaning cartridges, cleaning kit (cleaning sticks, tweezers, wipers)		

*1 Using Roland specified media, print travel of 1m, preset temperature of 25 °C (77 °F), humidity of 50% *2 Not assured when the print heater is used. *3 Automatic rolling function can only be used during printing. *4 The print heater temperature may not reach the preset temperature depending on ambient conditions or the width of the media. Unevenness in temperature may be larger depending on ambient conditions or the width of the media.

IS-1000 High Capacity Ink Delivery System	
Cartridge slots	24
Ink	Type
	Colors
Power supply	AC adapter, Input: AC 100 V ±10 % 50/60 Hz 1.7 A, Output: DC 24 V 2.8 A
Power consumption	Approx. 35 W
Dimensions	732 (W) x 445 (D) x 433 (H) mm (28-7/8 (W) x 17-9/16 (D) x 17-1/16 (H) in.) (excluding the stay)
Weight	46 kg (102 lb.)
Environment	Power on
	Power off
Included items	Dedicated AC adapter, power cord, and User's Manual
Roland VersaWorks System Requirements	
Operating system	Windows XP ServicePack 1 or later or Windows 2000 Service Pack 4 or later
CPU	Computer with Pentium 4 2.0 GHz or faster recommended
RAM	1 GB or more recommended
Free hard-disk space	40 GB or more recommended

Options		
ECO-SOL MEDIA	SPVCB-1870	PVC banner, 1870 mm x 15 m (74' x 49')
	SPVCB-1600	PVC banner, 1600 mm x 20 m (63' x 65')
	SPVCB-1270	PVC banner, 1270 mm x 20 m (50' x 65')
	SVB-B-1270	PVC banner, blackout, 1270 mm x 20 m (50' x 65')
	SP-M-1270	Matte PET film, 1270 mm x 30 m (50' x 98')
	SPP-G-1250	Glossy paper, 1250 mm x 30 m (49-3/16' x 98')
	SPFL-1300	Backlit film, 1300 mm x 30 m (51-1/8' x 98')
	SCM-GBMW-50-1180	Polyethylene banner, 1180 mm x 50 m (46-7/16' x 164')
	SCM-GPPG-50-914	White glossy photo paper, 914 mm x 50 m (36' x 164')
	SCM-GPPG-50-1270	White glossy photo paper, 1270 mm x 50 m (50' x 164')
ECO-SOL MAX	SCM-GVWG-40-1370	Monomeric calendared self adhesive vinyl white glossy-permanent adhesive, 1370 mm x 40 m (53-7/8' x 131')
	SCM-GVWG-40-1525	Monomeric calendared self adhesive vinyl white glossy-permanent adhesive, 1525 mm x 40 m (60' x 131')
	ESL3-MG	Magenta, 220 cc
	ESL3-YE	Yellow, 220 cc
	ESL3-CY	Cyan, 220 cc
	ESL3-BK	Black, 220 cc
	ESL3-LC	Light Cyan, 220 cc
	ESL3-LM	Light Magenta, 220 cc
	SL-CL	1 pc.
	Blades for SC-545EX	ZEC-U1005
ZEC-U5025		For thick, reflective and fluorescent vinyl, 5 pcs.
Blade holders for SC-545EX	XD-CH3	Blade holder with blade extension adjuster, made of resin
	XD-CH2	Blade holder with blade extension adjuster, made of aluminum
Take-up rollers	TU-750	For SJ-745EX
	TU-650	For SJ-645EX
	TU-550	For SC-545EX

ISO 14001 and ISO 9001:2000 Certified

Roland pursues both environmental protection and continuous quality improvement. Under the philosophy of preserving the environment and human health, Roland DG is actively working to abolish organic solvents in production, to reduce and recycle waste, to reduce power use, and to purchase recycled products. Roland DG constantly strives to provide the most highly reliable products available.



Roland reserves the right to make changes in specifications, materials or accessories without notice. Your actual output may vary. For optimum output quality, periodic maintenance to critical components may be required. Please contact your Roland dealer for details. No guarantee or warranty is implied other than expressly stated. Roland shall not be liable for any incidental or consequential damages, whether foreseeable or not, caused by defects in such products. PostScript is a trademark of Adobe Systems Incorporated. All other trademarks are the property of their respective owners.



AUTHORIZED DEALER:

Printed in Japan. RDG-90320 '05 SEP A-4 G-S

www.rolanddg.com



SOLJET PRO II
Sign Maker by Roland DG Corporation



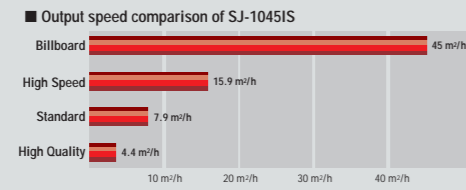
SJ-1045IS
SJ-745EX
SJ-645EX
SC-545EX

The Choice for Speed

First and foremost, V Technology is fast to meet the demanding requirements for banners and other advanced wide-format applications. In fact, V Technology brings to the PRO II V line an impressive 60% increase in speed when printing in the newly added 720 x 720 dpi print mode. This new print mode ensures the highest standards for precision while throughput remains quick and efficient. All of which adds up to better image quality and increased overall productivity for your business.

The Choice for Quality

V Technology continues to produce high quality even at high speeds. In 360 x 360 dpi Billboard print mode, the SJ-1045IS will print a 103"-wide banner in 4-color CMYK at up to 45m²/h (484 sqft/h). Primary colors remain crisp and vivid. Photos and illustrations retain their sharpness.



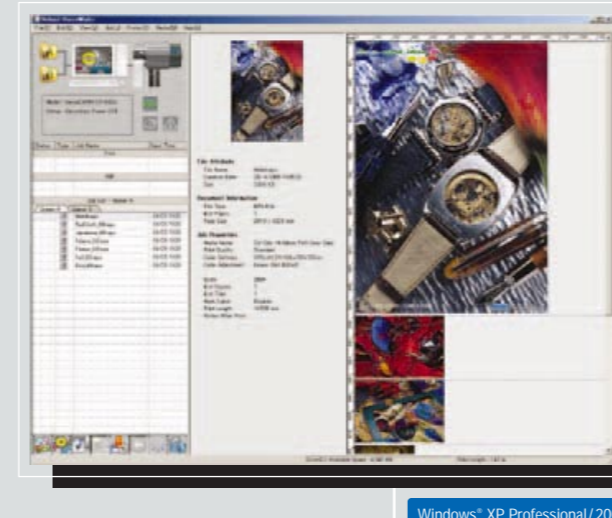
The Choice for Unmatched Artistic Reproduction

V Technology is precise. A new 1440 x 1440 dpi Artistic print mode makes the PRO II V ideal for large reproductions of artwork and photographs. This new mode allows you to maximize Roland's acclaimed printing technology, which uses Piezo print heads and digital servomotors to precisely control droplet placement in both the print head travel and paper feed directions.



Roland VersaWorks® — The Number One Choice for Top Professionals

V Technology features Roland VersaWorks, powerful and comprehensive software RIP designed by Roland to take full advantage of the company's award-winning inkjet technology. With advanced features including profiles for both low-priced uncoated media and quality Roland Certified ECO-SOL MAX media, VersaWorks ensures optimum performance to meet your customer's every demand. The VersaWorks Media Explorer allows you to customize settings to manage media, colors and cut paths for your SOLJET PROII V inkjet. VersaWorks is compatible with genuine Adobe® PostScript® 3™, ensuring smooth and natural gradations with 12-bit image processing to prevent tone shifts. An automatic online update feature delivers the latest VersaWorks version and profiles directly to your computer. VersaWorks is compatible with Windows XP Professional and 2000.



Automatic tiling for billboards and signs

Auto layout for managing multiple jobs

Convenient controls for adjusting the brightness and contrast of each color

Preview colors for different media or to assess color adjustments

Fully functional settings for media, colors and cutting for powerful users

Supports networking environment with two input queues for different output settings



SOLJET PROII V

Sign Maker by Roland DG Corporation



ECO-SOL MAX INK — The Choice for Versatile, Scratch-Resistant Performance

ECO-SOL MAX features significant new enhancements including faster drying time, improved scratch resistance, higher density, wider color gamut and performance with both coated and uncoated substrates including 150 types of low-cost uncoated media. Low-maintenance ECO-SOL MAX is virtually odorless, and does not require any special ventilation or environmental equipment. Choose ECO-SOL MAX for crisp graphics that last up to three years outdoors without lamination.*

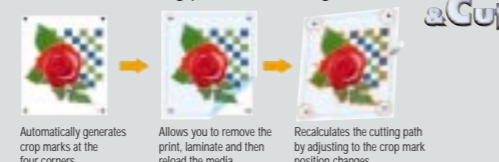


The Choice for Flexibility

When it comes to media, V Technology delivers the flexibility you need for optimum performance and cost efficiency. Choose from commercially available uncoated media for excellent print quality at lower production costs. Or select Roland's genuine ECO-SOL Media for the very finest print quality, available for both outdoor and indoor applications. More than 100 ready-to-use printing profiles are available through www.rolanddg.com to ensure pleasing results with minimum effort.

The Choice for Versatility

For the ultimate in versatility, choose the SC-545EX integrated printer/cutter. The SC-545EX includes Quadralign®, the ideal solution for contour cutting laminated graphics. Quadralign automatically generates four corner crop marks, allowing you to remove a print, laminate it, and then reload it for contour cutting. The system compensates for skew and distortion, ensuring precision cutting.



The Choice for Optimum Results

The PRO II V line includes a full range of additional hardware features designed to maximize performance:

- The SJ-1045IS includes the new IS-1000 high capacity ink delivery system with a total ink volume of up to 5280 cc and a heavy-duty media handling system.
- A newly added 3-level lever enables you to adjust print head height to accommodate media thickness ranging from canvas or banner material to fine films.
- Built-in media edge clamps prevent print defects due to media curling.
- A sheet cutter makes trimming media as easy as pushing a button.
- A media counter allows you to record and track the amount of media remaining on a roll and print this information on the media itself.
- The print head cleaning system keeps print heads in top condition for long-term use.



Media width 104"



SJ-1045IS

● 104" 6-color CMYKLm or 4-color CMYK printer with IS-1000 high capacity ink delivery system

Media width 74"



SJ-745EX

● 74" 6-color CMYK + LcLm or 4-color CMYK printer

Media width 64"



SJ-645EX

● 64" 6-color CMYK + LcLm or 4-color CMYK printer

Media width 54"



SC-545EX

● 54" 6-color CMYK + LcLm printer/cutter

*Three years outdoor durability is based on accelerated weather tests conducted by Roland DG. Results may vary depending upon location and application.